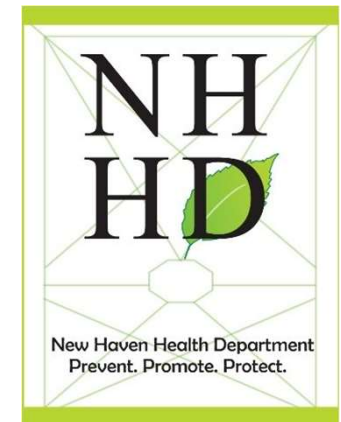


COVID19 SITUATIONAL UPDATE AND REOPENING EFFORTS

BOE MEETING
8/23/2021



Maritza Bond , MPH
Director of Health
New Haven Health Department

Covid-19 7-Day Statistics

Nationwide:

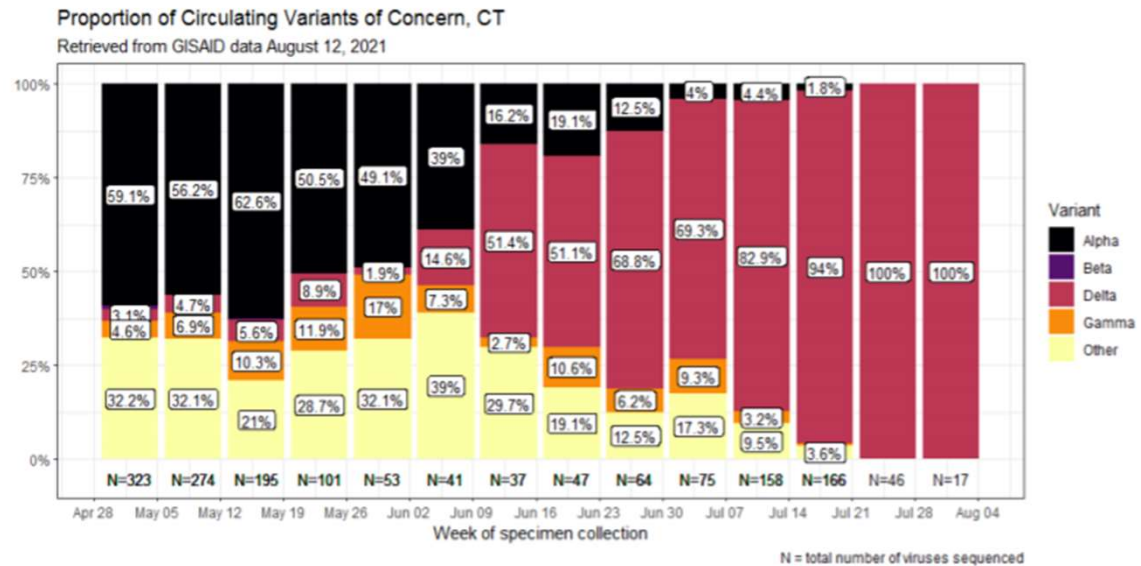
- 800,000+ new cases
- Delta accounts for **93%** of all new cases

Statewide:

- 3,000+ new cases
- **Test positivity: 3.52%**

City-wide:

- 180+ new cases
- **Test positivity: 2.68%**



Covid-19 Hospitalizations: New Haven, CT

Hospitalizations at YNHH

- **53 patients** currently hospitalized with Covid-19
- **16 patients** are fully vaccinated

Trends in New Hospital Admissions in Children Ages 0–17 Years



Updated CDC Guidance for Fully Vaccinated Individuals

Updated information for fully vaccinated people as of July 27th, 2021

- Added a recommendation for fully vaccinated people to **wear a mask in public indoor settings** in areas of [substantial or high transmission](#).
- Added information that fully vaccinated people might choose to **wear a mask regardless of the level of transmission**, particularly if they are immunocompromised or at [increased risk for severe disease](#) from COVID-19, or if they have someone in their household who is immunocompromised, at increased risk of severe disease or not fully vaccinated.
- Added a recommendation for fully vaccinated people who have a known exposure to someone with suspected or confirmed **COVID-19 to be tested 3-5 days after exposure**, and to **wear a mask** in public indoor settings for 14 days or until they receive a negative test result.
- CDC recommends **universal indoor masking** for all teachers, staff, students, and visitors to schools, regardless of vaccination status

Source: <https://www.cdc.gov/coronavirus/2019-ncov/vaccines/fully-vaccinated.html>

HEALTH AND SAFETY MEASURES

-
- Promoting vaccination
 - Consistent and correct mask use
 - Physical distancing and cohorting
 - Ventilation
 - Handwashing and respiratory etiquette
 - Staying home when sick and getting tested
 - Contact tracing in combination with isolation and quarantine
 - Cleaning and disinfecting

HEALTH AND SAFETY: VACCINATION

- **Vaccination is the single best prevention strategy against Covid-19**
- NHPS provided over **100 vaccination clinics** and **5 different ways** for staff to be vaccinated through partnership of New Haven Health Department, Fair Haven Community Health Center, Cornell Scott Hill Health Center and Yale New Haven Health System.
- We are holding **vaccination clinics for students** now and well through the Summer in partnership with New Haven Health Department and Griffin Hospital
- We will be holding **school onsite vaccination clinics**- TBA
- For vaccination sites and other COVID-19 related information: [New Haven Covid Hub](#)



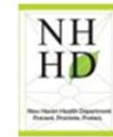
Photo :New Haven Independent 3/3/21

Vaccine Mandate

- Governor issued an executive order related to the COVID-19 emergency declarations ([Executive Order No. 13D](#)) requiring that all Connecticut state employees and staff of all childcare facilities and **preK-12 schools statewide** must have received at least one dose of a COVID-19 vaccine by **September 27, 2021**.
- Those who do not get vaccinated due to certain **exemptions** will be **required to be tested** for COVID-19 on a weekly basis.



NEW HAVEN PUBLIC SCHOOLS



HEALTH AND SAFETY: VACCINATION

CDC Toolkits and promotional materials for both educators and students linked [here](#)

ABOUT COVID-19 VACCINES | COVID-19 |

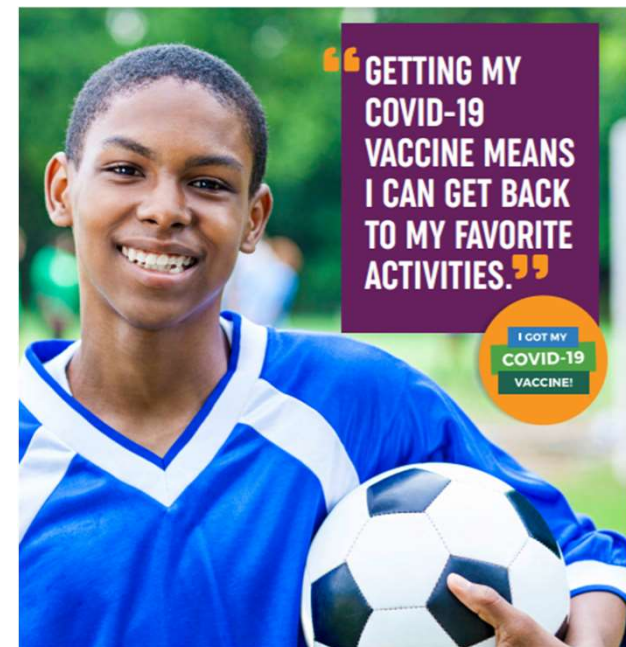
You can help stop the spread of COVID-19!



- 1** COVID-19 vaccines are safe and effective.
- 2** The shots will help protect you from getting very sick, being hospitalized, or dying.
- 3** You may have some side effects after you are vaccinated, like a fever, chills, sore muscles, or feeling tired. This is normal and lasts only a few days.
- 4** Even after you get the vaccine, protect yourself and others:
 - ▶ Wear a mask
 - ▶ Stay at least 6 feet away from other people when possible
 - ▶ Wash your hands often



[cdc.gov/coronavirus](https://www.cdc.gov/coronavirus)



A safe and effective vaccine to prevent COVID-19 is now available for everyone 12 years and up. Get yours today! Learn more: www.cdc.gov

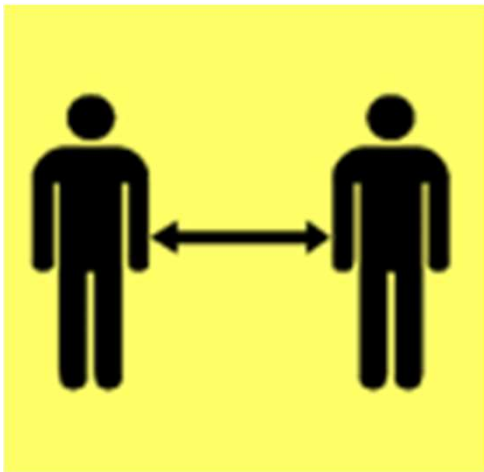
HEALTH AND SAFETY: UNIVERSAL MASKING



Students and Staff must wear face coverings or masks that completely cover the nose and mouth while in the school building and on school bus, with exceptions only for those students for whom it is not safe to do so due to medical conditions.

“**Mask Breaks**” will continue to be provided during the day. Parents will be responsible for providing students with face coverings or masks. Schools will have backup disposable masks available for students who forget them.

HEALTH AND SAFETY: PHYSICAL DISTANCING



Where feasible:

- Maximum distancing will be used
- Cohorts will be maintained
- Bathroom occupancy limitations

HEALTH AND SAFETY: LIMITED ACCESS



- Safety Precautions will **limit unnecessary entrance of parents, guardians and other visitors** into the building.
- NHPS will **continue to use video conferencing** to hold meetings for convenience of participants
- If an in-person meeting is necessary, the **visiting parties must wear a mask at all times** in NHPS buildings regardless of vaccination status

HEALTH AND SAFETY: HAND WASHING




Students must engage in **frequent hand washing** or sanitizing with an alcohol-based hand sanitizer upon arrival, before and after meals, after bathroom use, and after coughing or sneezing.


STAYING HOME WHEN SICK & GETTING TESTED

**DON'T FEEL WELL?
STAY HOME WHEN YOU ARE SICK**


Tell your mom, dad, or caregiver before you come to school. Tell your teacher or an adult if you become sick at school




cough




Shortness of breath
or problem breathing




chills



sore throat



loss of taste
or smell



muscle pain

**OTHER SYMPTOMS
INCLUDE:**

fever, runny nose, diarrhea, feeling nauseous
or vomiting, feeling tired, headache,
and poor appetite

- **Staying home when sick with COVID-19 is essential** to keep COVID-19 infections out of schools and prevent spread to others.
- Allow flexible, non-punitive, and supportive paid sick leave policies and practices that
 - **Encourage sick workers to stay home** without fear of retaliation, loss of pay, or loss of employment level and
 - Provide **excused absences** for students who are sick.

NEW HAVEN PUBLIC SCHOOLS FACILITIES DEPARTMENT RETURN TO SCHOOL (FISCAL YEAR 2021-2022) COVID-19 CLEANING & DISINFECTION PLAN

This checklist is to be used to deep clean and disinfect all common touch point surfaces, or for an entire facility.

CHECKLIST INSTRUCTIONS:

- Cleaning staff are required to initial the appropriate box for areas that they have sanitized.
- Checklists must be copied and filed on-site then submitted by Building Managers to Supervisors weekly.
- Supervisors are required to approve each form by printing and initialing the top right of each form.
- Supervisors will provide a copy of each form to Environmental Health & Safety Trainer & Coordinator (E.H.S.). The E.H.S will then file electronic and hard copies.
- See sample of completed form (Fig. 1)

Products used: Hillyard Q.T® Plus 24 Arsenal or Hillyard Re-Juv-Nal® (EPA Reg # 1839-169-1658). These are CDC approved products for the treatment of surfaces contaminated by the COVID-19 virus. See links below for SDS sheets.

<https://b2b.hillyard.com/productdetail/index/grid/wwm/PD~HIL0082400>

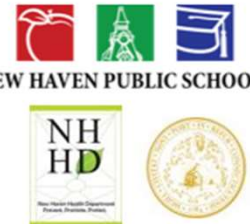
<https://b2b.hillyard.com/productdetail/index/grid/wwm/PD~HIL0081600>

CLEANING STEPS:

- Apply eye protection and gloves
- Clean and wipe surface
- Disinfect with backpack sprayer utilizing "ready to use" Hillyard Q.T® Plus 24 Arsenal" or Re-Juv-Nal® solution.
- Allow product to remain on surface for 10 minutes of contact time

SCHOOL NAME: *James Hillhouse High School* WEEK ENDING: *June 2, 2020* SUPERVISOR: *John Tice* J.T.
FIRST LAST INITIAL

GYM	MONDAY			TUESDAY			WEDNESDAY			THURSDAY			FRIDAY			SATURDAY			SUNDAY		
	Early	Mid	EOD	Early	Mid	EOD	Early	Mid	EOD	Early	Mid	EOD	Early	Mid	EOD	Early	Mid	EOD	Early	Mid	EOD
Switches/Plates	J.M.	J.M.	D.F.	S.L.	S.L.	D.F.	J.M.	J.M.	D.F.	J.M.	J.M.	M.G.	J.M.	J.M.	D.F.	E.S.	E.S.	D.F.	J.M.	J.M.	D.F.
Bleachers	J.M.	J.M.	D.F.	S.L.	S.L.	D.F.	J.M.	J.M.	D.F.	J.M.	J.M.	M.G.	J.M.	J.M.	D.F.	E.S.	E.S.	D.F.	J.M.	J.M.	D.F.
AB Athletic equipment	J.M.	J.M.	D.F.	S.L.	S.L.	D.F.	J.M.	J.M.	D.F.	J.M.	J.M.	M.G.	J.M.	J.M.	D.F.	E.S.	E.S.	D.F.	J.M.	J.M.	D.F.
All Locker Room Areas	J.M.	J.M.	D.F.	S.L.	S.L.	D.F.	J.M.	J.M.	D.F.	J.M.	J.M.	M.G.	J.M.	J.M.	D.F.	E.S.	E.S.	D.F.	J.M.	J.M.	D.F.
Mats	J.M.	J.M.	D.F.	S.L.	S.L.	D.F.	J.M.	J.M.	D.F.	J.M.	J.M.	M.G.	J.M.	J.M.	D.F.	E.S.	E.S.	D.F.	J.M.	J.M.	D.F.
Apparatus	J.M.	J.M.	D.F.	S.L.	S.L.	D.F.	J.M.	J.M.	D.F.	J.M.	J.M.	M.G.	J.M.	J.M.	D.F.	E.S.	E.S.	D.F.	J.M.	J.M.	D.F.
KITCHEN/CATERER	Early	Mid	EOD	Early	Mid	EOD	Early	Mid	EOD	Early	Mid	EOD	Early	Mid	EOD	Early	Mid	EOD	Early	Mid	EOD
Appliances / Utensils	J.M.	J.M.	D.F.	S.L.	S.L.	D.F.	J.M.	J.M.	D.F.	J.M.	J.M.	M.G.	J.M.	J.M.	D.F.	E.S.	E.S.	D.F.	J.M.	J.M.	D.F.
Sinks/ Faucets	J.M.	J.M.	D.F.	S.L.	S.L.	D.F.	J.M.	J.M.	D.F.	J.M.	J.M.	M.G.	J.M.	J.M.	D.F.	E.S.	E.S.	D.F.	J.M.	J.M.	D.F.
Counters	J.M.	J.M.	D.F.	S.L.	S.L.	D.F.	J.M.	J.M.	D.F.	J.M.	J.M.	M.G.	J.M.	J.M.	D.F.	E.S.	E.S.	D.F.	J.M.	J.M.	D.F.
Switches/Plates	J.M.	J.M.	D.F.	S.L.	S.L.	D.F.	J.M.	J.M.	D.F.	J.M.	J.M.	M.G.	J.M.	J.M.	D.F.	E.S.	E.S.	D.F.	J.M.	J.M.	D.F.
Tables / Prep Tables	J.M.	J.M.	D.F.	S.L.	S.L.	D.F.	J.M.	J.M.	D.F.	J.M.	J.M.	M.G.	J.M.	J.M.	D.F.	E.S.	E.S.	D.F.	J.M.	J.M.	D.F.
Seats	J.M.	J.M.	D.F.	S.L.	S.L.	D.F.	J.M.	J.M.	D.F.	J.M.	J.M.	M.G.	J.M.	J.M.	D.F.	E.S.	E.S.	D.F.	J.M.	J.M.	D.F.
LIBRARY	Early	Mid	EOD	Early	Mid	EOD	Early	Mid	EOD	Early	Mid	EOD	Early	Mid	EOD	Early	Mid	EOD	Early	Mid	EOD
Computers/ Mouse	J.M.	J.M.	D.F.	S.L.	S.L.	D.F.	J.M.	J.M.	D.F.	J.M.	J.M.	M.G.	J.M.	J.M.	D.F.	E.S.	E.S.	D.F.	J.M.	J.M.	D.F.
Counters	J.M.	J.M.	D.F.	S.L.	S.L.	D.F.	J.M.	J.M.	D.F.	J.M.	J.M.	M.G.	J.M.	J.M.	D.F.	E.S.	E.S.	D.F.	J.M.	J.M.	D.F.
Switches/Plates	J.M.	J.M.	D.F.	S.L.	S.L.	D.F.	J.M.	J.M.	D.F.	J.M.	J.M.	M.G.	J.M.	J.M.	D.F.	E.S.	E.S.	D.F.	J.M.	J.M.	D.F.
Tables	J.M.	J.M.	D.F.	S.L.	S.L.	D.F.	J.M.	J.M.	D.F.	J.M.	J.M.	M.G.	J.M.	J.M.	D.F.	E.S.	E.S.	D.F.	J.M.	J.M.	D.F.
Seats	J.M.	J.M.	D.F.	S.L.	S.L.	D.F.	J.M.	J.M.	D.F.	J.M.	J.M.	M.G.	J.M.	J.M.	D.F.	E.S.	E.S.	D.F.	J.M.	J.M.	D.F.
AUDITORIUM	Early	Mid	EOD	Early	Mid	EOD	Early	Mid	EOD	Early	Mid	EOD	Early	Mid	EOD	Early	Mid	EOD	Early	Mid	EOD
Seats	J.M.	J.M.	D.F.	S.L.	S.L.	D.F.	J.M.	J.M.	D.F.	J.M.	J.M.	M.G.	J.M.	J.M.	D.F.	E.S.	E.S.	D.F.	J.M.	J.M.	D.F.
Microphone / Pedium	J.M.	J.M.	D.F.	S.L.	S.L.	D.F.	J.M.	J.M.	D.F.	J.M.	J.M.	M.G.	J.M.	J.M.	D.F.	E.S.	E.S.	D.F.	J.M.	J.M.	D.F.
Handles	J.M.	J.M.	D.F.	S.L.	S.L.	D.F.	J.M.	J.M.	D.F.	J.M.	J.M.	M.G.	J.M.	J.M.	D.F.	E.S.	E.S.	D.F.	J.M.	J.M.	D.F.



Student Tracing

Nurse notified of Positive Case or Exposure

Nurse/Administrator completes VEOCI reporting form

Nurse conducts contact tracing any close students and staff contacts in school or on bus

Nurse advises administrator of individual(s) need to self-isolate & criteria to return to school

Contact Tracer documents follow up, contact tracing, and clearance on VEOCI reporting form

Staff Tracing

Administrator notified of Positive Case or Exposure

Administrator completes VEOCI reporting form

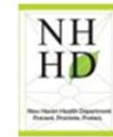
Contact Tracer traces any close students and staff contacts in school

Contact Tracer advises administrator of individual(s) need to self-isolate & criteria to return to school

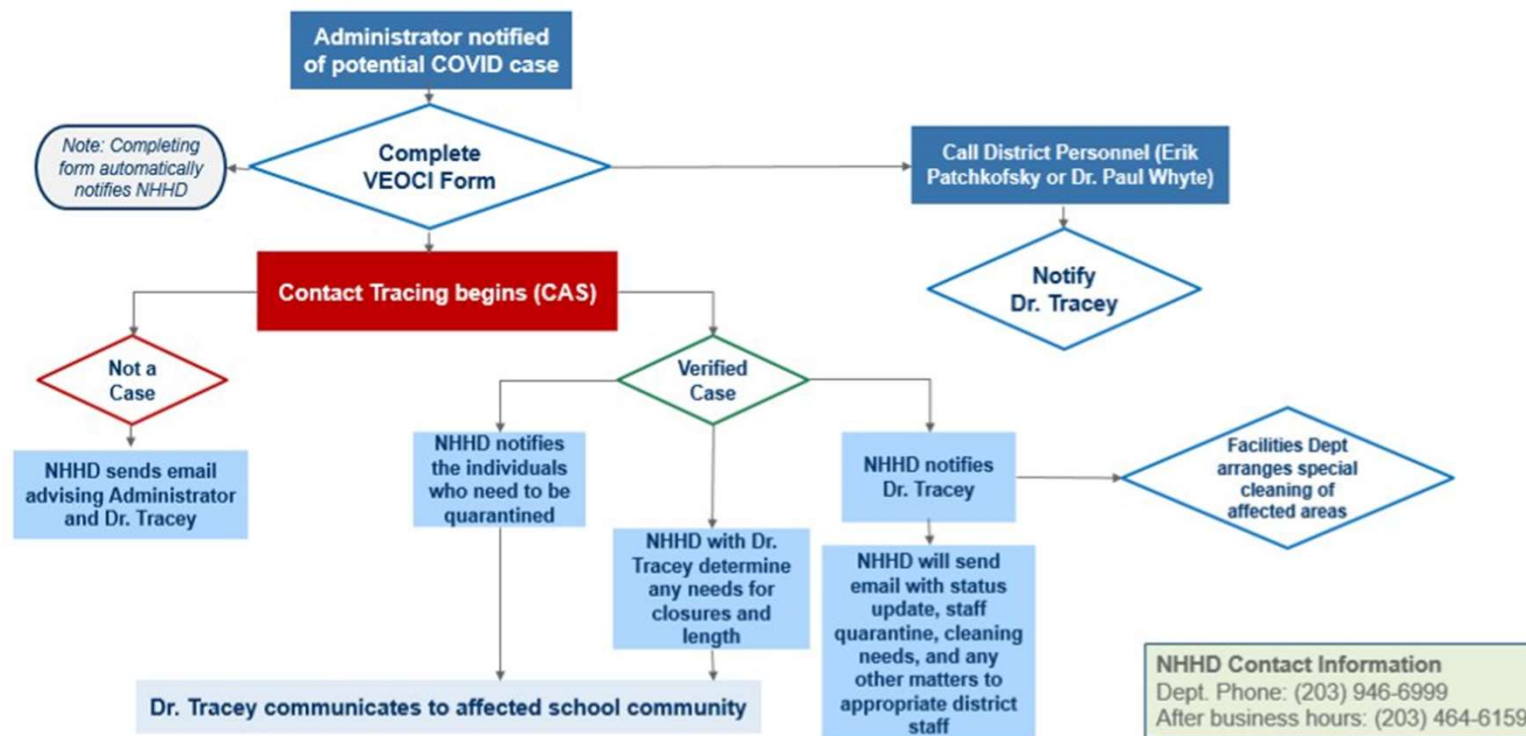
Contact Tracer documents follow up, contact tracing, and clearance on VEOCI reporting form



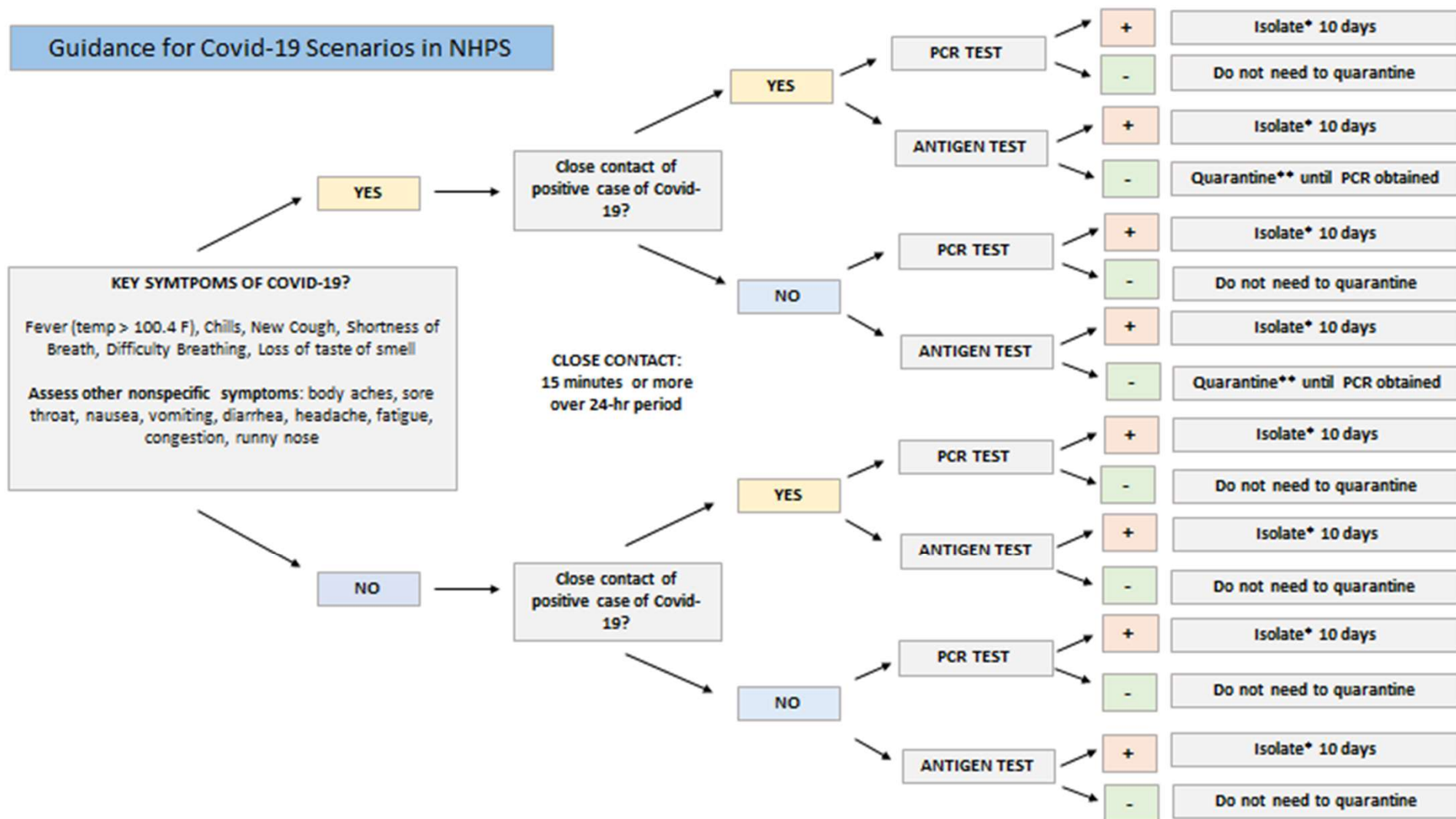
NEW HAVEN PUBLIC SCHOOLS



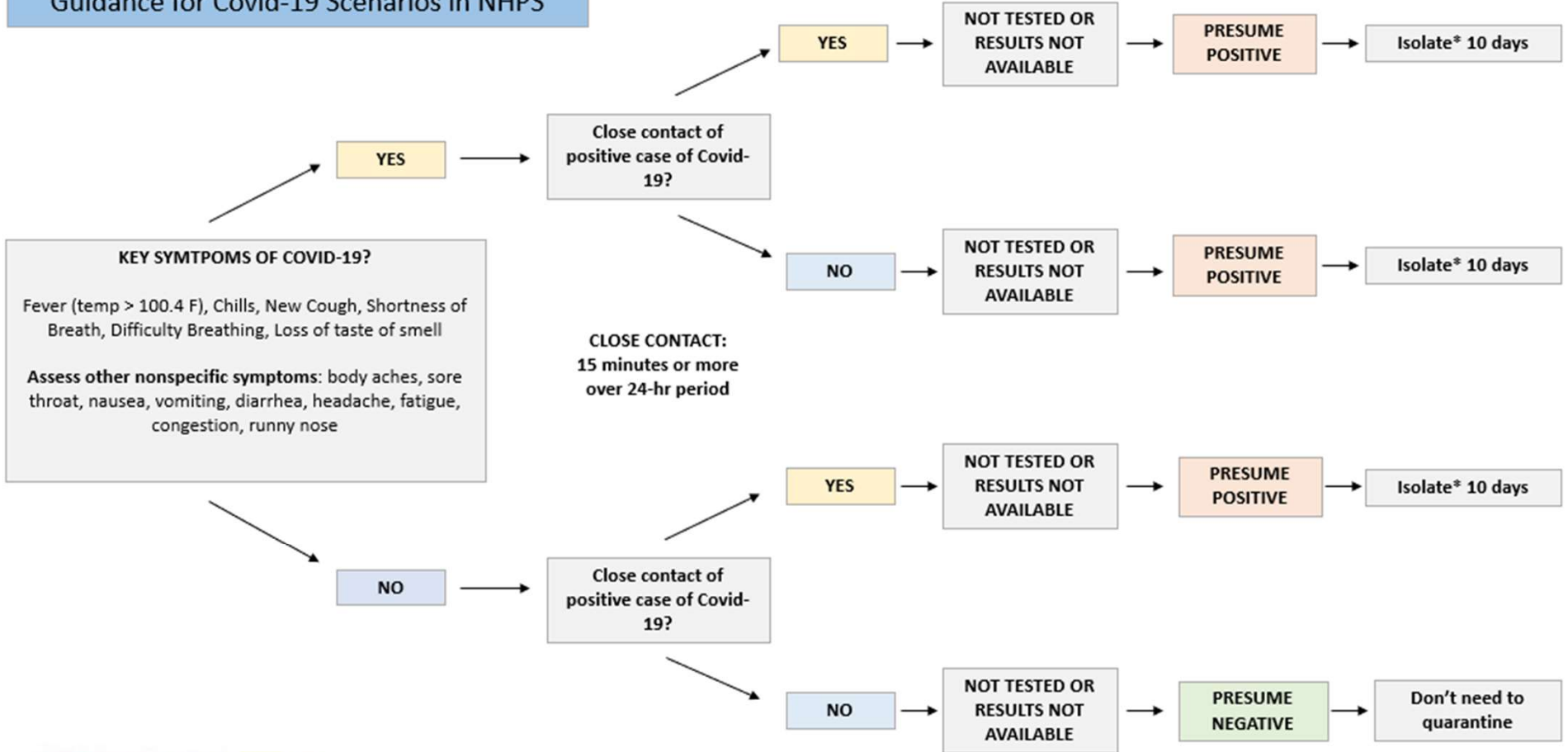
STAFF REPORTING PROTOCOL



Guidance for Covid-19 Scenarios in NHPS



Guidance for Covid-19 Scenarios in NHPS



Guidance for Covid-19 Scenarios in NHPS

*Isolate for at least 10 days since the onset of symptoms and until at least 24 hours have passed with no fever (without fever-reducing medications) and improvement of other symptoms- both vaccinated and unvaccinated persons

**If confirmatory PCR test is negative, individual does not need to quarantine. If confirmatory PCR test is positive, individual should isolate.

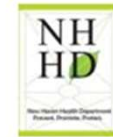
***Fully vaccinated persons (14 days following second dose of mRNA vaccine) do NOT need to quarantine after contact with someone who had Covid-19 unless they have symptoms. They should get tested 3-5 days after their exposure, even if they don't have symptoms and wear a mask indoors in public for 14 days following exposure or until their test result is negative.

****If school district policy permits exit from quarantine after

- a) 10 days if no symptoms. Continue to monitor symptoms days 11-14. If symptoms develop, isolate immediately and contact HCP; increase attentiveness to mitigating actions OR
- b) 7 days (with a documented negative test result taken no earlier than day 5). Continue to monitor symptoms days 8-14 and if symptoms develop, isolate immediately and contact HCP; increase attentiveness to mitigating actions



NEW HAVEN PUBLIC SCHOOLS



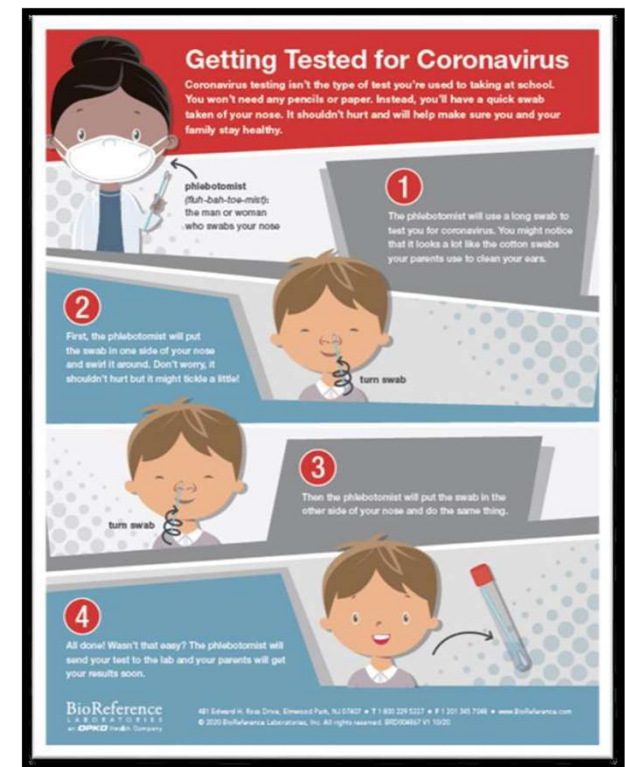
HEALTH AND SAFETY: TESTING & SCREENING

Diagnostic Testing Locations

- Linked [HERE](#)

Weekly Screening

- Transition from ICATT testing program to ELC for expanded testing (flyers coming soon for parents)
- Weekly **asymptomatic testing** for the fall semester for **unvaccinated** K-12 students
- Using the lower nasal swab PCR
- Results in 24 hours to parents and health department
- We are currently working on expansion and planning for Fall 2021






Public Health Nurse Coverage Update

HEALTH AND SAFETY: BUS SAFETY

- Students will be required to wear a facemask.
- If a student does not have a mask, the bus driver will provide a mask to the student.
- Students should keep **6 feet apart** while waiting at the bus stop.
- If a student is accompanied by an attendant, they must comply with face mask and bus stop requirements.
- School bus drivers will wear masks, and enforce safety, boarding and alighting.
- Bus Disinfecting 2x per day
- Ventilation: Drivers will **keep windows open** unless safety dictates otherwise



Summary

- **Mitigation Strategies** aligned with CSDE guidance
 - Public Health **technical support and monitoring** will continue
 - **Vaccine Mandate** will aid with prevention infections
 - **Public Health Nurses** assignments in place
- 



NHHD CONTACT INFORMATION

- **Contact the New Haven Department of Health:**
 - Department Phone: (203) 946-6999
 - **After Business Hours:**
 - Emma Allen – COVID Epidemiologist (203) 464-6159
 - Dorothy Cohen – General Epidemiologist (203) 410-5922